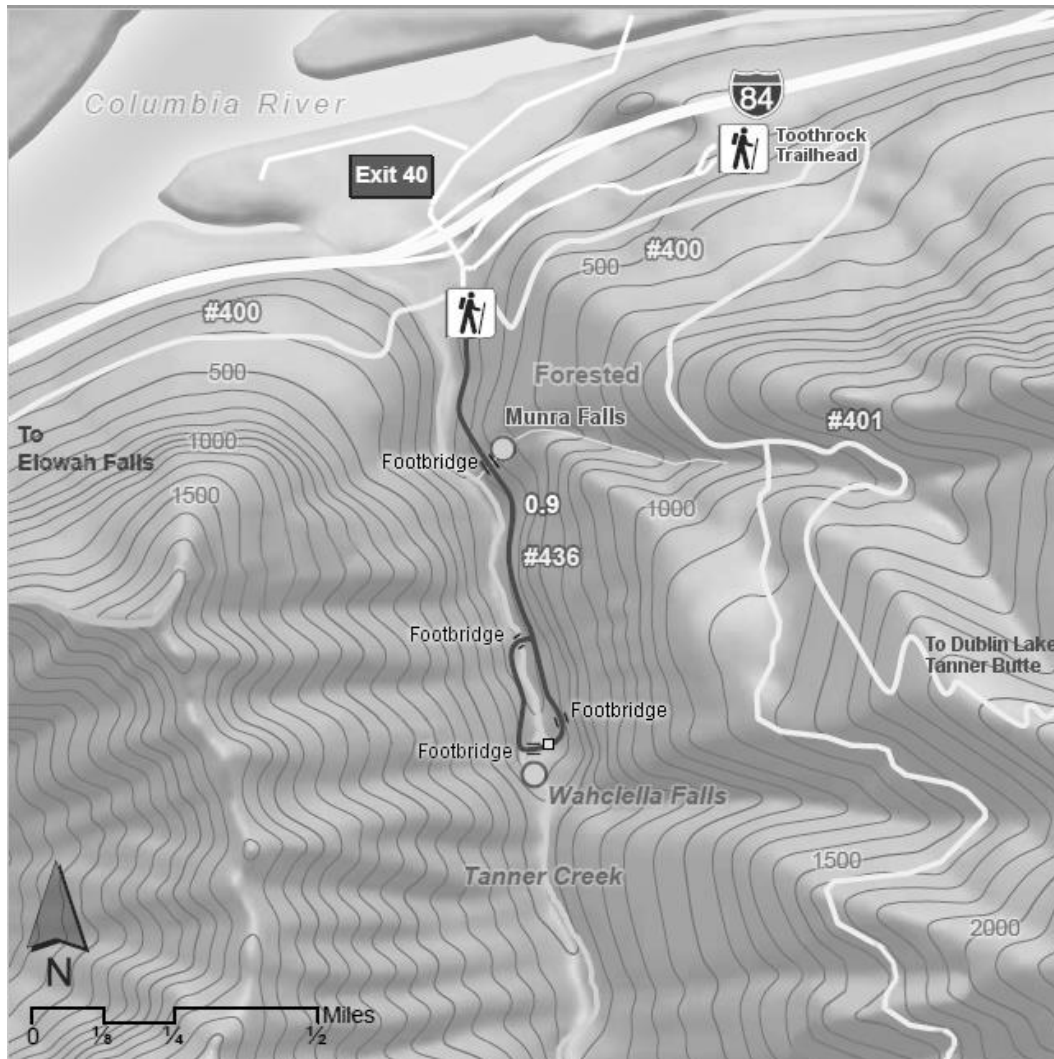


Wahclella Falls



Length: 2.0 miles Round Trip

Elevation Change: 300' gain

Season: Year Around

Permit: NW Forest Pass Required. No pass required at the Toothrock Trailhead

Features: Waterfalls, bridges, bird watching

This hike is terrific, and relatively easy, compared to other trails in the Gorge. Start at the Wahclella Falls trailhead parking lot and walk along a service road parallel to Tanner Creek for about a quarter mile. In the fall you can see the salmon in this stream. As you continue on your hike, you will gently begin to climb.

In about a 1/2 mile you will come to a junction where the trail splits, using four bridges to provide you the opportunity to view the falls and canyon from both sides of Tanner Creek. If you bear left, after about 3/4 of a mile you will begin to descend right to the base of Wahclella Falls. You can continue across a bridge to gain additional views of this wonderful waterfall and the little gorge that it is in. You will then cross another bridge and the trail will loop back to the junction that you passed earlier.

How to get there:

Wahclella Falls/Toothrock Trailheads: From I-84, take Exit #40/Bonneville Dam. Turn south at the stop sign and drive about 100 feet. Stay to the right and head downhill to Wahclella Falls trailhead. Going left takes you to Toothrock trailhead.