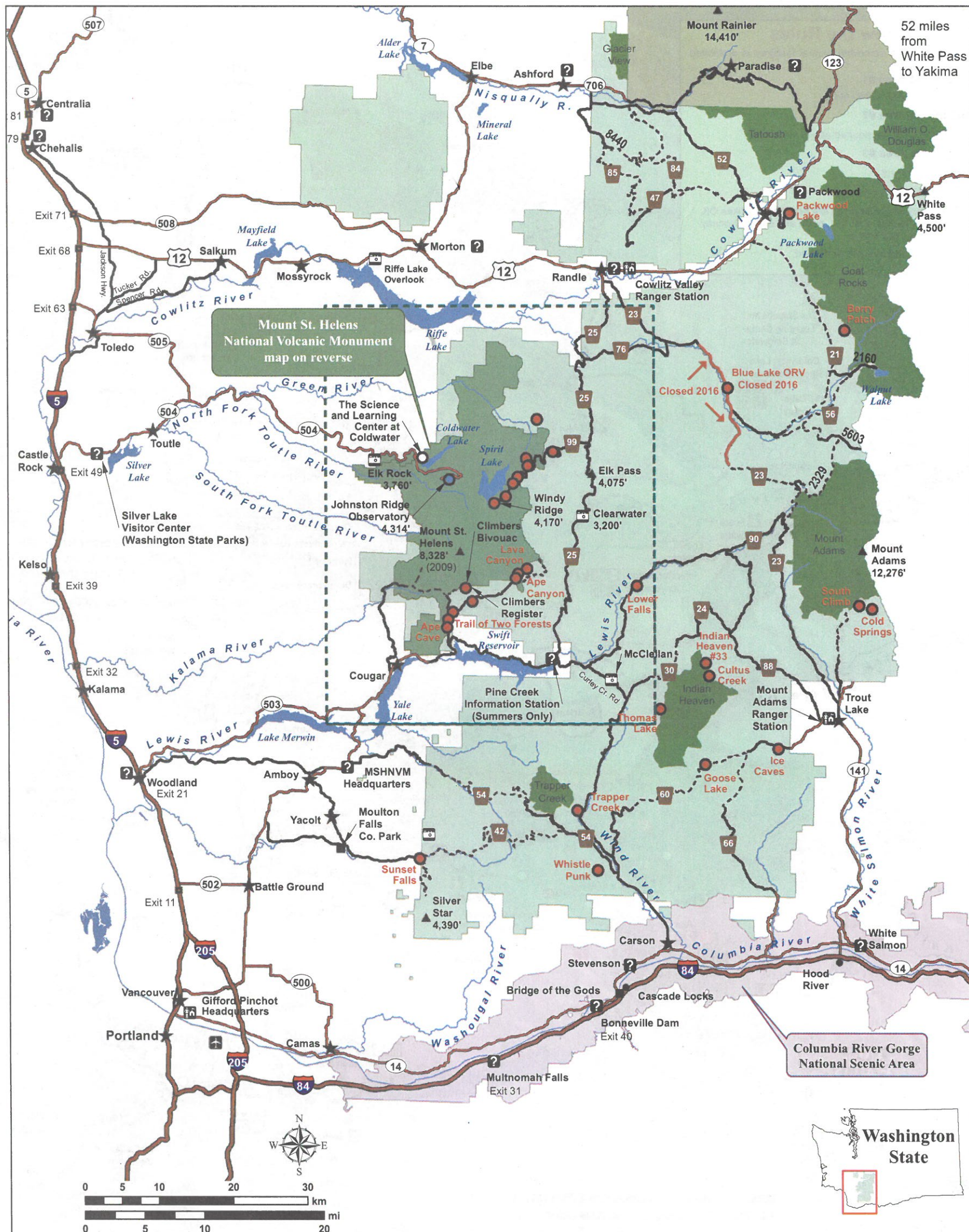




Gifford Pinchot National Forest Vicinity



for the greatest good



For more information, visit our website:
<http://www.fs.usda.gov/giffordpinchot>
 or call (360) 891-5000
 USDA is an equal opportunity provider,
 employer, and lender.

- Gifford Pinchot NF**
- Admin. Boundary
 - Mount St. Helens NVM
 - Wilderness Area
 - Columbia River Gorge NSA
 - Paved Road
 - Gravel Road
 - Information

- Landmarks**
- Locale
 - Summit
 - City, Town, Community
 - Airport
 - Recreation Sites
 - Fee Sites
 - Monument Pass

- Transportation**
- Interstate Hwy.
 - US, State or County Hwy.
 - Other Paved Road
 - Milepost Marker
- Hydrography**
- Lakes and River Areas
 - Rivers

This map is intended for general reference and is approximate in general proportions.
 Elevations are in Feet
 Printed July, 2016
 Road and Recreation Conditions Report:
www.fs.usda.gov/recmain/giffordpinchot/recreation